

PRODUCTS

» Instant Messaging

» Chat Server

» Forum Server

eLiveEngine

» Presentation

» Benefits

» Feature Tour

eLiveEngine

Software > eLiveEngine

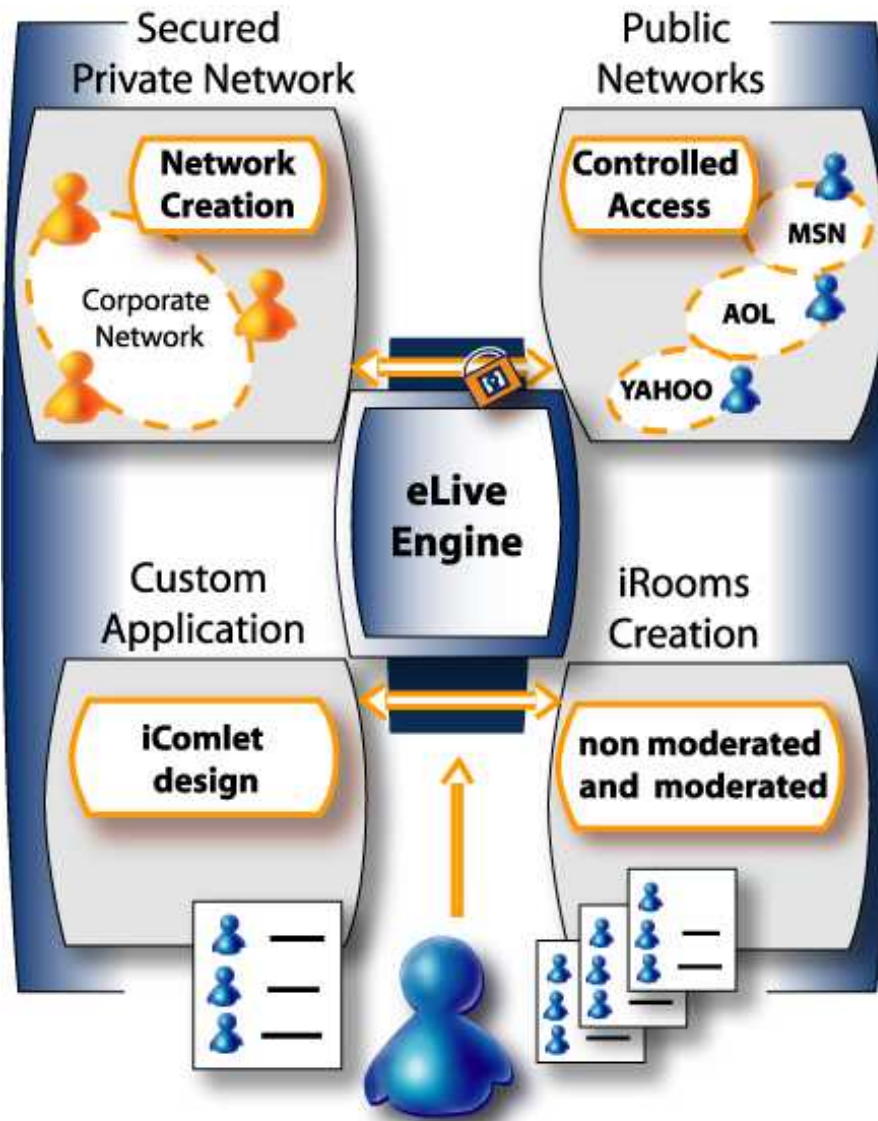
eLiveEngine is a Instant Communications platform that greatly simplifies the development of custom business specific instant communication applications. It meets the need to build instant communication applications that are reliable, scalable while permitting a shorter time to market.

eLiveEngine is the core engine of 12Planet ICS (Instant Communications Suite), an overview of ICS architecture can be [downloaded here](#).

Email this page

Printable version


Our Customers



Sample business processes that can be enhanced using eLiveEngine:

- Provide immediate assistance to employees through application built-in "click for assistance" button

- Broadcast news alerts to traders, journalists based on subscription rules
- Conduct brainstorming sessions with coworkers based on keyword alerts
- Conduct negotiation with partners, suppliers through private one to one or public broadcast discussion channels

 For more information on how 12Planet may help you on your custom project, contact us using the following form: [click here](#).

[:: Top](#)

12Planet, copyright © 1996 - 2010. All rights reserved
Secure Corporate Instant Messaging and Chat Server Software

eLiveEngine is a natural evolution of the successful Chat Server, Instant Messaging Server, Agent Server and Forum Server software, and has been developed to become the ultimate software platform that supports 12planet's creed:

"One-to-One, One-to-Many", One-to-Planet Instant Communication anywhere".

Whether in intranet/extranet or Internet environments, 12Planet's dedicated eLiveEngine addresses the demand for private and powerful instant messaging services and meets the need for community building which empower businesses to :

- o Increase productivity
- o Reduce operating costs
- o Improve work efficiency
- o Improve customer service
- o Drive traffic and generate advertising revenues
- o Build customer loyalty and awareness
- o Expand global reach
- o Address international customers in their own language and expand your global reach

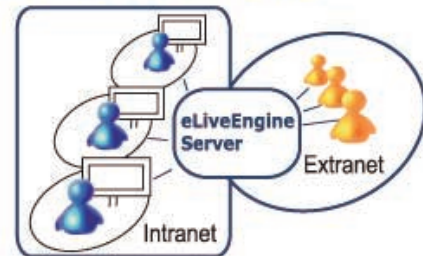
The solution that suits corporate instant communication needs :

eLiveEngine embodies 12planet's new generation of instant communication server applications by offering a centralized platform for implementing instant communication services:

eLiveEngine

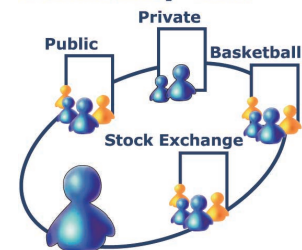
► Instant messaging with presence notification for secured collaborative work on private networks: one-to-one discussions, online conferencing, online meeting

Instant Messaging



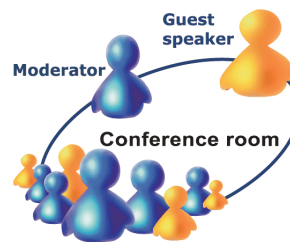
► Community chat and online meeting

Community Chat

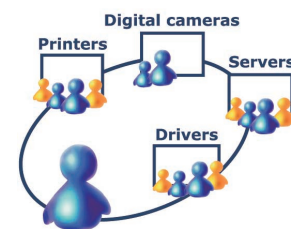


► Online conferences, net-events...

Live net-event

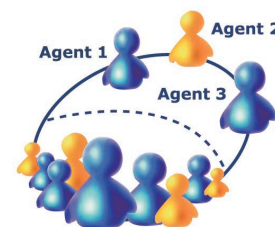


Message Boards



► Message boarding

Online assistance



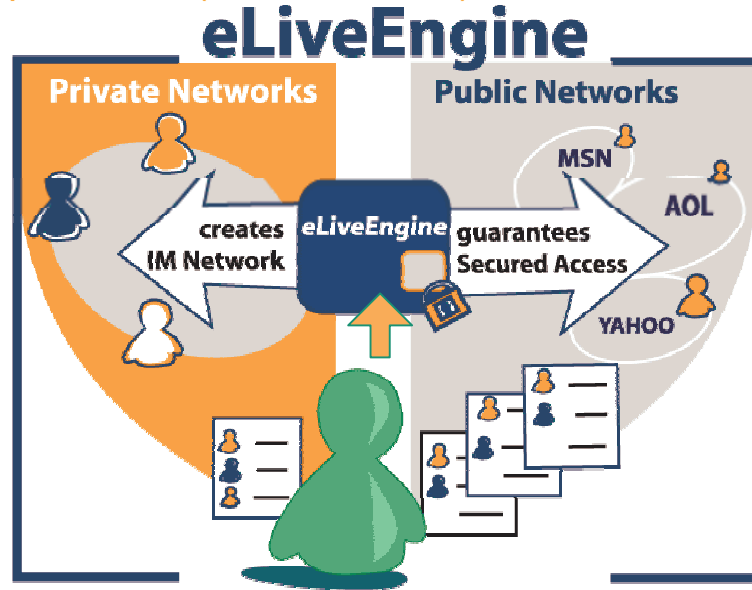
► live assistance (technical support, helpdesk, sales) or any unique service based on a unique instant communication e-application

A unified instant communication server platform

e
L
i
v
e
n
g
i
n
e

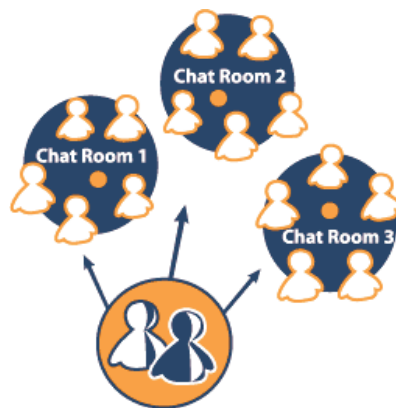
>> building full private corporate networks

>> using public networks (AOL, MSN and Yahoo!) with secured access

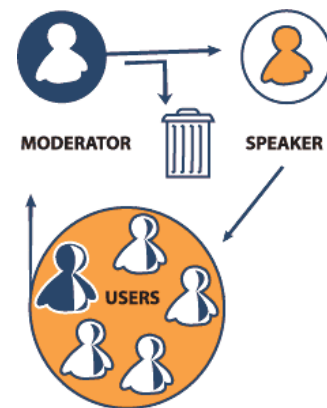


>> creating iRooms for online conference, community chat, net-events, message boards

Standard iRooms:



Moderated iRooms:



>> designing a custom instant communication application for unique services

Easy to install

Fully integrable on server side

Integration with any corporate information system

Corporate network integration

100% customisable on client side

The solution that meets all corporate requirements:

- Quick wizard based installation process
- 100% Java based technology
- Multiplatform support (Windows, Mac OS X, SUN Solaris, Linux, IBM, HP)
- Integration into intranet or internet websites with a web wizard and HTML customizable graphical charter
- Integration into SSL secured website (available in Version 3.2)
- Mapping with any corporate directory: Microsoft's Active directory, LDAP and SQL directories or any standalone SQL database.
- J2EE compliant for standalone use or with BEA Weblogic, IBM Websphere, SuniPlanet, Oracle Application Server
- Servlet provided (which can be replaced by any other one)
- JDBC databases compliant (mySQL, Oracle8i)

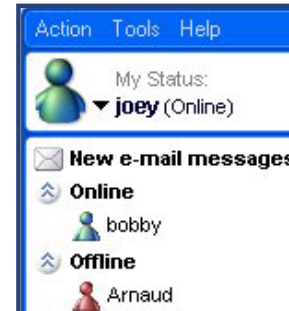
- Log storing: any JDBC database or via API
- Any custom instant communication requirement: Cf. Instant Communication Server SDK

- Full support of corporate private network and VPN
- Access able from end-user behind firewall, DMZ and proxy with pure HTTP protocol (available in Version 3.2)

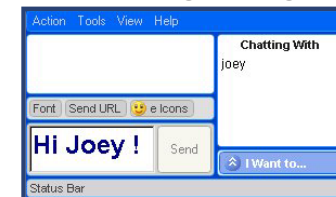
- Pure web access support and optional desktop applications:
- 100% customizable applets to suit any graphical charter: adding logos and graphics for branding, applying different skins, defining your own icons.
- Public Network Instant Messenger client configuration of SOCKS 4 server name in the desktop application
- Customizable 12planet messenger client to suit any graphical charter integration (integration with Component Client Java Development Kit)

INSTANT MESSAGING private conversations online conferences & meetings

1 Who's online



2 Initiating dialog



3 Reply



4 Add someone to the conversation



5 Remove someone from the conversation

Internationalization

- Multilingual support to suit international needs
- Translation options for end-users to communicate with people speaking a different language

Easy to administrate

- 100% web based and centralized administration console for consulting and/or managing:
- server runtime properties
 - status reports
 - private and public instant messaging networks
 - iRooms
 - end-user accounts

Security

- Secured access to administrator features
- Password protection of iRooms
- Full SSL support
- Message encryption for very security demanding applications (optional)
- Message filtering system per iRoom

High performance & scalability

- Multithreaded architecture benefits from multiprocessor machine to support high load
- Multi-blocks deployment support allowing high scalability for the load support

Enhanced user experience

- Quick login process
- Skins
- Text and emoticons
- Language translation option

Deployment Flexibility Internationalization

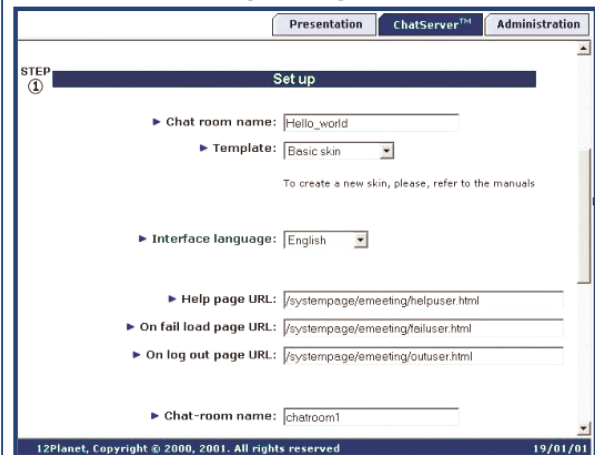
- Optional advanced modules for:
 - SMS connectivity (SDK)
 - Voice communication (SDK) + video-emailing solution?
 - Custom instant services (SDK): access directory, alerts, real-time translation, company news ...

iROOMS & USERS MANAGEMENT

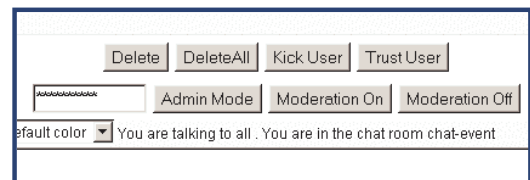
1 Administrator Login



2 Integrating iRooms



3 Managing iRooms and users



4 Reviewing iRooms activities

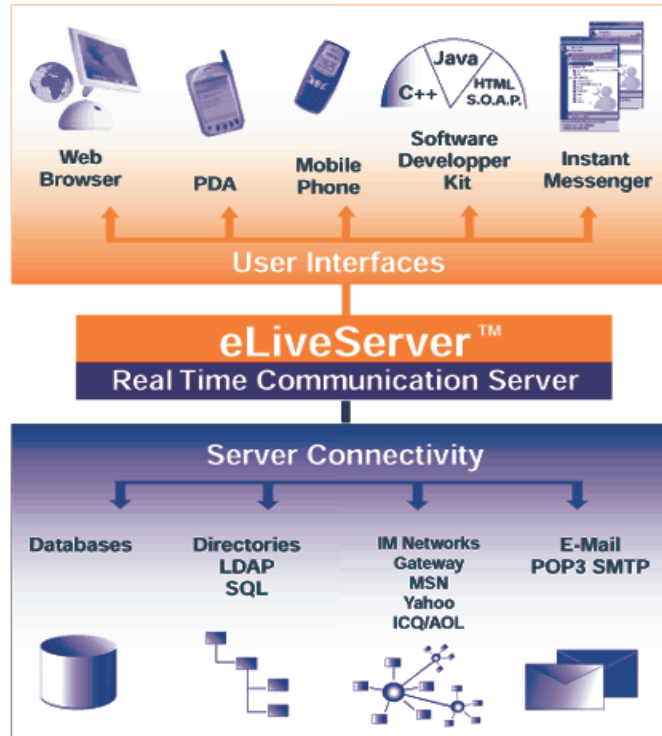


eLiveEngine: solutions for all businesses

e-banking	e L i v e E n g i n e	Lehman Brothers
e-learning		UCLA
retail sales		Sony Music
ISP and telco		France Telecom
operators		Cable and Wireles
media		Alcatel
entertainment		Toyota
government		US Army
administration		AT&T
recruitment		Accenture
travel		Selftrade
etc...		IBM

eLiveEngine Technology for all businesses: system components

Thanks to 12Planet software your project team will be able to create chat, forum, conference and instant messaging platforms based on 12Planet's technology™ which offers a core interactive function to third generation web sites, meets all integration requirements of professional projects and assure ROI and short-time-to-market.



Evolutivity:

eLiveEngine provides Java APIs enabling developers to deploy iComlets i.e. to create and implement any instant communication application using the following core objects:

- **Network transport handlers** (socket, HTTP, etc)
- **Messages** (information object between client and server)
- **Filters** (define a process on messages)

eLiveEngine allows the fast programming of instant communication corporate applications such as :

- **Network servers:** instant messaging network based on any protocol
- **Network proxy and gateway servers:** connection with other IM networks, wireless network, SMS, etc
- **Service-buddy systems:** automated information push services provided as a buddy (directory access, company news, translation service, alerts, etc).

12planet's eLiveEngine allows the development of any instant communication application while guaranteeing:

- **Evolutivity and connectivity with any enterprise information system** thanks to server modular APIs
- **Evolutivity towards any future instant communication protocol** (IMIP, IETF's SIMPLE and any proprietary protocols)

